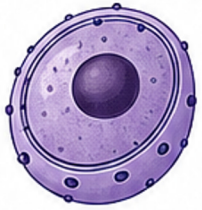


# CELL ORGANELLE LABEL CARDS

✂ Cut out the cards and use them to label cell diagrams or for sorting activities.



## Nucleus

Contains DNA and controls the cell's activities.



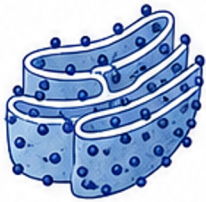
## Chloroplast

Site of photosynthesis. Contains chlorophyll to capture light energy.



## Mitochondrion

Site of cellular respiration. Releases energy for the cell.



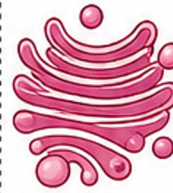
## Rough ER

Folds of membrane with ribosomes. Synthesises and transports proteins.



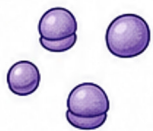
## Smooth ER

Folds of membrane without ribosomes. Synthesises lipids and detoxifies.



## Golgi Apparatus

Modifies, sorts and packages proteins and lipids into vesicles.



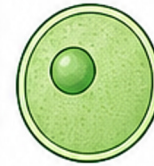
## Ribosomes

Site of protein synthesis.



## Lysosome

Contains digestive enzymes that break down waste and old cell parts.



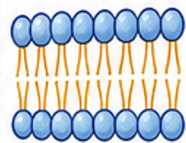
## Peroxisome

Breaks down fatty acids and harmful substances. Detoxifies the cell.



## Vacuole

Stores water, food and waste. Helps maintain turgor pressure in plant cells.



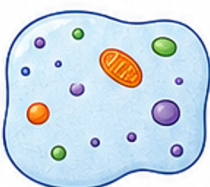
## Cell Membrane

Thin, flexible barrier that controls what enters and leaves the cell.



## Cell Wall

Rigid layer outside the cell membrane. Provides support and protection (plant cells only).



## Cytoplasm

Jelly-like fluid where organelles are found and reactions occur.



## Centrosome

Organises microtubules and helps in cell division (animal cells).



## Cilia / Flagellum

Hair-like structures that help cells move or move substances across the cell surface.